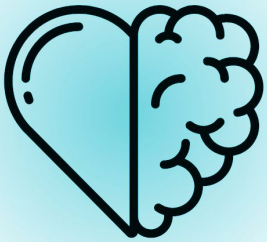




**ANNE ARUNDEL  
COALITION**

Guiding Coalition  
January 25, 2023





*Welcome to the team!*

Donna Perkins, Director of Assessment and Planning

Mindi Garrett, Healthy Anne Arundel Coordinator

## Mental Health and Wellness

- ✦ Chairperson: Tameka Smith
- ✦ Work Plan progress
- ✦ Community Monitoring
- ✦ Next steps

PLANNING





## MH&W **Work Plan:**

**2022 SUCCESS:** Supported AAMHA with Relaunch of the Network of Care; currently over 500 provider and service listings

### **2023 Plan Jan - May:**

- May Mental Health Awareness Month Campaign, embed promotion of Network of Care
- HAAC as the home for repository of local events and trainings, and sharing information broadly
  - Publication to [HAAC website](#)
  - Utilization of communication tools to share with partners

*There is a lot of work ahead of us.  
Here is how you can help:*

## **Organization Participation in May Mental Health**

### **Awareness Campaign:**

- Website Feature, social media, email signatures, displaying/distributing materials

### **Marketing and Promotional Materials:**

- Advertisements on buses and bus shelters estimate: \$2620 (6 ads for 1 month)
- Mobile ads \$2000 (430,000 impressions)
- Social Media ads \$2000 (250,000 impressions)
- Supplying promotional materials



# Shared Measures

## May Mental Health Awareness Campaign:

- Network of Care Website Traffic (have prior data for comparison)
- Number of Organizations Participating in Campaign & Type of Participation
- Total of promotional materials distributed
- Mental Health Awareness Month Event Home Website Traffic

## Community Indicators:

- Number of Suicide Mortality and Attempts
- Number of ED encounters for Behavioral Health Conditions
- Number of suicide risk assessments for students
- Number of Opioid overdoses





# SHOUT OUT!

*Thank you for your dedication*

Anne Arundel Mental Health Agency

Anne Arundel County Department of Health

Anne Arundel County Board of Education

Community Members

Local Providers

Arundel Lodge

Anne Arundel County Public Libraries

Office of the County Executive

## Healthy Eating and Active Living

- ✦ Chairperson: Ann Heiser Buzzelli
- ✦ Work Plan progress
- ✦ Community Monitoring
- ✦ Next steps







## HEAL **Work Plan:**

**2022 SUCCESS:** Received CareFirst grant to support platform for local resources ([findhelp.org](https://findhelp.org), formerly Aunt Bertha)

### **2023 Plan:**

- HAAC as the home for repository of local resources, and sharing information broadly
  - Widespread collection of local resources
  - Publication of resources to [findhelp.org](https://findhelp.org)
  - Communication Plan to share with partners, stakeholders, and the public

# Shared Measures

## Resources and Communication Plan:

- Number and type of resources collected (also useful in identifying gaps for future work)
- Publication to findhelp.org and other platforms
- Development of Communication Plan
  - Promotional materials distributed
  - Findhelp.org Website Traffic
  - Number of organizations promoting/using findhelp.org

## Community Indicators:

- % of the population lacking adequate access to food
- % of residents who are overweight/obese





# SHOUT OUT!

*Thank you for your dedication.*

Anne Arundel County Department of Health

Tennis Alliance of Anne Arundel County

Anne Arundel Medical Center

Anne Arundel County Food Bank

Partnership for Children, Youth, and Families

UM Baltimore Washington Medical Center

Chesapeake Children's Museum

Anne Arundel County Food Bank

Head Start, Y of Central Maryland

Local Providers and Community Members

# *Farewell,*

Alexis Barnes

*Thank you for all your hard  
work. We are sad to see you go.*





**ANNE ARUNDEL  
COALITION**

# 2023

## Closing Remarks

## Community Calendar

### Next Meeting: April 26, 2023

[HealthyAnneArundel@aacounty.org](mailto:HealthyAnneArundel@aacounty.org)

<https://www.HealthyAnneArundel.org/>



<https://www.facebook.com/HealthyAAC>

January							February							March						
Sun	Mon	Tue	Wed	Thu	Fri	Sat	Sun	Mon	Tue	Wed	Thu	Fri	Sat	Sun	Mon	Tue	Wed	Thu	Fri	Sat
1	2	3	4	5	6	7	29	30	31	1	2	3	4	26	27	28	1	2	3	4
8	9	10	11	12	13	14	5	6	7	8	9	10	11	5	6	7	8	9	10	11
15	16	17	18	19	20	21	12	13	14	15	16	17	18	12	13	14	15	16	17	18
22	23	24	25	26	27	28	19	20	21	22	23	24	25	19	20	21	22	23	24	25
29	30	31	1	2	3	4	26	27	28	1	2	3	4	26	27	28	29	30	31	1
5	6	7	8	9	10	11	5	6	7	8	9	10	11	2	3	4	5	6	7	8

April							May							June						
Sun	Mon	Tue	Wed	Thu	Fri	Sat	Sun	Mon	Tue	Wed	Thu	Fri	Sat	Sun	Mon	Tue	Wed	Thu	Fri	Sat
26	27	28	29	30	31	1	30	1	2	3	4	5	6	28	29	30	31	1	2	3
2	3	4	5	6	7	8	7	8	9	10	11	12	13	4	5	6	7	8	9	10
9	10	11	12	13	14	15	14	15	16	17	18	19	20	11	12	13	14	15	16	17
16	17	18	19	20	21	22	21	22	23	24	25	26	27	18	19	20	21	22	23	24
23	24	25	26	27	28	29	28	29	30	31	1	2	3	25	26	27	28	29	30	1
30	1	2	3	4	5	6	4	5	6	7	8	9	10	2	3	4	5	6	7	8

July							August							September						
Sun	Mon	Tue	Wed	Thu	Fri	Sat	Sun	Mon	Tue	Wed	Thu	Fri	Sat	Sun	Mon	Tue	Wed	Thu	Fri	Sat
25	26	27	28	29	30	1	30	31	1	2	3	4	5	27	28	29	30	31	1	2
2	3	4	5	6	7	8	6	7	8	9	10	11	12	3	4	5	6	7	8	9
9	10	11	12	13	14	15	13	14	15	16	17	18	19	10	11	12	13	14	15	16
16	17	18	19	20	21	22	20	21	22	23	24	25	26	17	18	19	20	21	22	23
23	24	25	26	27	28	29	27	28	29	30	31	1	2	24	25	26	27	28	29	30
30	31	1	2	3	4	5	3	4	5	6	7	8	9	1	2	3	4	5	6	7

October							November							December						
Sun	Mon	Tue	Wed	Thu	Fri	Sat	Sun	Mon	Tue	Wed	Thu	Fri	Sat	Sun	Mon	Tue	Wed	Thu	Fri	Sat
1	2	3	4	5	6	7	29	30	31	1	2	3	4	26	27	28	29	30	1	2
8	9	10	11	12	13	14	5	6	7	8	9	10	11	3	4	5	6	7	8	9
15	16	17	18	19	20	21	12	13	14	15	16	17	18	10	11	12	13	14	15	16
22	23	24	25	26	27	28	19	20	21	22	23	24	25	17	18	19	20	21	22	23
29	30	31	1	2	3	4	26	27	28	29	30	1	2	24	25	26	27	28	29	30
5	6	7	8	9	10	11	3	4	5	6	7	8	9	31	1	2	3	4	5	6